







30 Pin Magazine Code 019447	Battery Code 019903	Battery charger + cable Code 019482 (UK) Code 019649 (EU)
		
Tool cleaner 300ml Code 115251	Lubricating oil Code 401482	Cleaning Kit Code 013690
		

PULSA

65

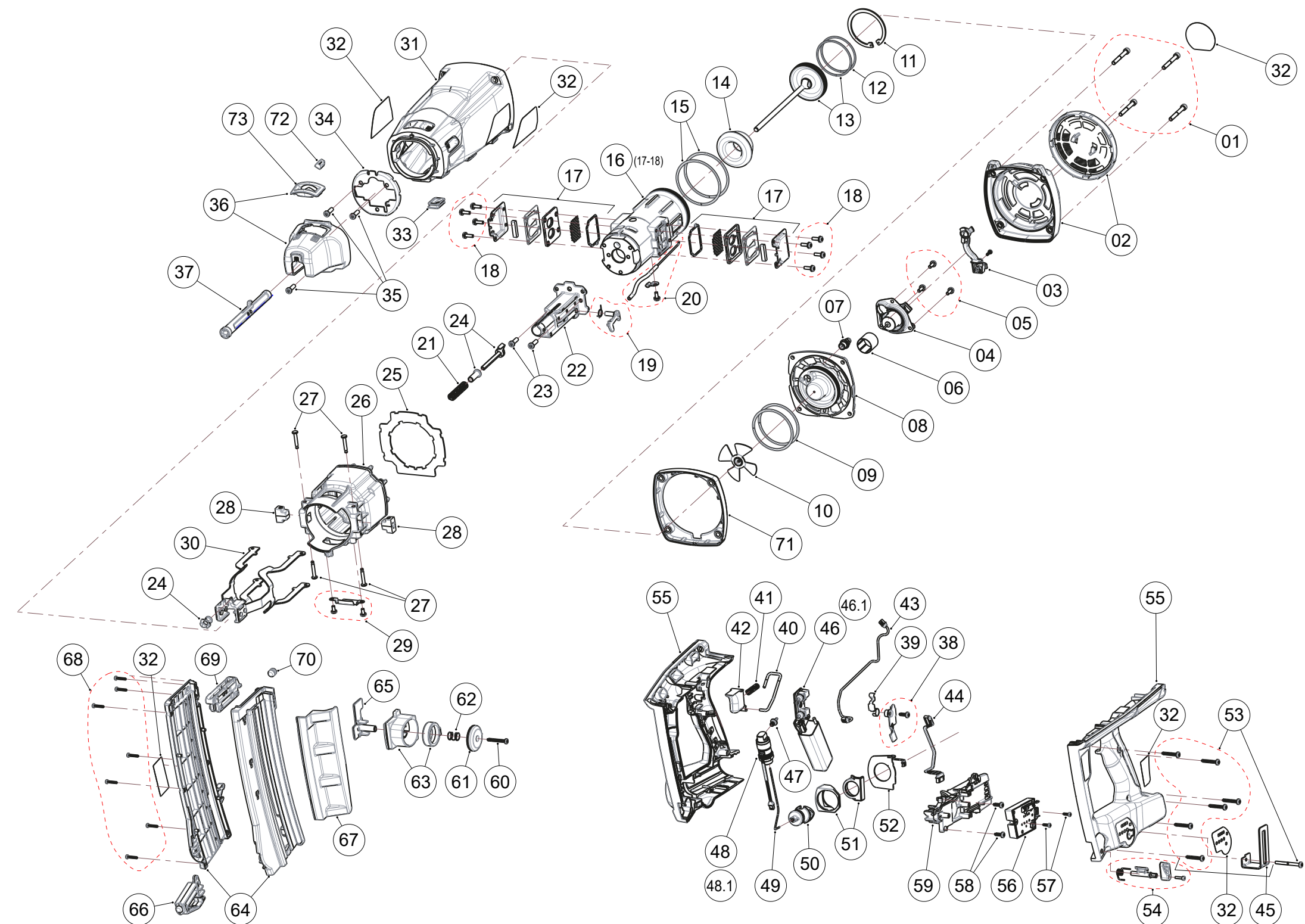
TOOL SCHEMATIC AND PARTS



IMPORTANT!
DO NOT DESTROY
Always refer to operating and safety instructions (#019344 & #014749) for detailed information on this tool. It is the customer's responsibility to have all operators and service personnel read and understand this information.



PART LEGEND



REP	CODE	DESIGNATION	DESCRIPTION
01	019355	Ens. 4 vis CHC M5-40 capot arrière	4 CHC M5-40 screws assy.
02	019932	Ens. capot arrière	Rear cap assy.
03	013808	Ens. guide fil bougie	Wire guide assy.
04	018416	Ens. moteur électrique avec support	Fan motor assy.
05	018415	Ens. 3 vis moteur torx 8-32x7/16	3 motor screws torx 8-32x7/16 assy.
06	321590	Gaine moteur	Motor sleeve
07	013731	Ens. bougie	Spark plug assy.
08	018418	Culasse	Cylinder head
09	013356	Ens. 2 segments culasse	2 Cylinder head metal ring assy.
10	321660	Ventilateur	Fan blade
11	018432	Circlip piston	Stop retaining ring
12	019646	Ens. 2 segments piston	2 metal piston assy.
13	018433	Ens. masselotte	Piston assy.
14	018434	Amortisseur piston	Bumper
15	018435	Ens. 2 segments cylindre	2 metal sleeve ring assy.
16	018438	Ens. cylindre	Cylinder assy.
17	019509	Ens. 2 échappements	2 Exhaust assy.
18	019460	Ens. 8 vis échappement	8 exhaust screws assy.
19	018465	Ens. levier anti tir à vide	Lockout bracket follower assy.
20	019642	Ens. tube injection	Injection pipe assy.
21	018437	Ressort chambre combustion	Combustion chamber spring
22	019450	Support guide tampon P65	Pin guide support
23	018477	Ens. 2 vis support guide tampon	2 Pin guide support screws assy.
24	019643	Ens. axe réglage DOD	DOD adjustemnt axis assy.
25	018428	Membrane étanchéité	Air dam membrane
26	018430	Ens. chambre de combustion	Combustion chamber assy.
27	018475	Ens. 4 axes chambre	4 combustion chamber stop pin assy.
28	018443	Ens. 2 amortisseurs chambre	2 combustion chamber bumper assy.
29	018431	Ens. butée verrou chambre	Combustion chamber lockout assy.
30	018419	Cage	Upper probe
31	019364	Carter	Housing body
32	019448	Ens. kit étiquettes P65	Label kit P65 assy.
33	018445	Pare chaleur	Electrovalve heat protection
34	018467	Insert déflecteur	Deflector insert
35	018474	Ens. 3 vis déflecteur	3 deflector insert screws assy.
36	018469	Déflecteur	Deflector
37	019449	Guide tampon plaquiste P65	P65 drywall nose piece
38	019516	Ens. support levier contacteur	Contact level plate assy.
39	019644	Levier contacteur mise en appui	Contact level
40	018431	Verrou de chambre	Combustion chamber lock bar
41	019517	Ressort détente	Trigger spring
42	019518	Détente	Trigger
43	018478	Faisceau électrique moteur	Electric motor wires
44	018454	Faisceau électrique platine LED	Wire plate LED
45	019368	Ens. crochet ceinture	Belt hook assy.
46	018447	MEFI P800 P+	MEFI P800 E/P
46.1	018498	MEFI P800 P+ "Orange"	MEFI P800 E/P "Orange"
47	013739	Ens. raccord électrovanne	Electrovalve plug connection
48	018453	Electrovanne	Electrovalve
48.1	018496	Electrovanne "Orange"	"Orange" Electrovalve
49	018470	Ens. tube intermédiaire	Intermediary pipe assy.
50	018472	Ens. raccord cartouche	Fuel cell connection assy.
51	018476	Ens. bouton éjection cartouche	Fuel cell ejection button assy.
52	018463	Antenne RFID	Antenna
53	018456	Ens. 7 vis poignée	7 handle screws assy.
54	018442	Ens. verrou magasin	Lock magasin assy.
55	019370	Ens. poignée D & G	Right & Left handle assy.
56	018448	Platine LED	LED plate
57	018480	Ens. 2 vis platine LED	2 LED plate screws assy.
58	018479	Ens. 2 vis support cartouche	2 fuel cell support assy.
59	018440	Support cartouche	Fuel cell support
60	019519	Vis bouton poussoir magasin	Button carrier screw
61	019645	Bouton poussoir magasin	Button carrier
62	018461	Ressort bouton poussoir magasin	Button carrier spring
63	019374	Ens. manette magasin	Magazine carrier assy.
64	019640	Ens. flasque magasin D & G P65	Right & Left magazine flange assy.
65	018460	Poussoir magasin	Follower
66	019641	Talon magasin	Magazine heel
67	019639	Bavette magasin	Magazine protective cap
68	018471	Ens. 7 vis magasin	7 magazine screws assy.
69	019451	Bloc connexion	Shear bloc
70	018449	Butée élastomère magasin	Rubber magazine stop
71	018420	Ens. entretoise moteur P800P+	Motor brace assy. P800P+
72	018487	Bouton levier DOD	DOD Button lever
73	018444	Capot levier DOD	DOD rear follower